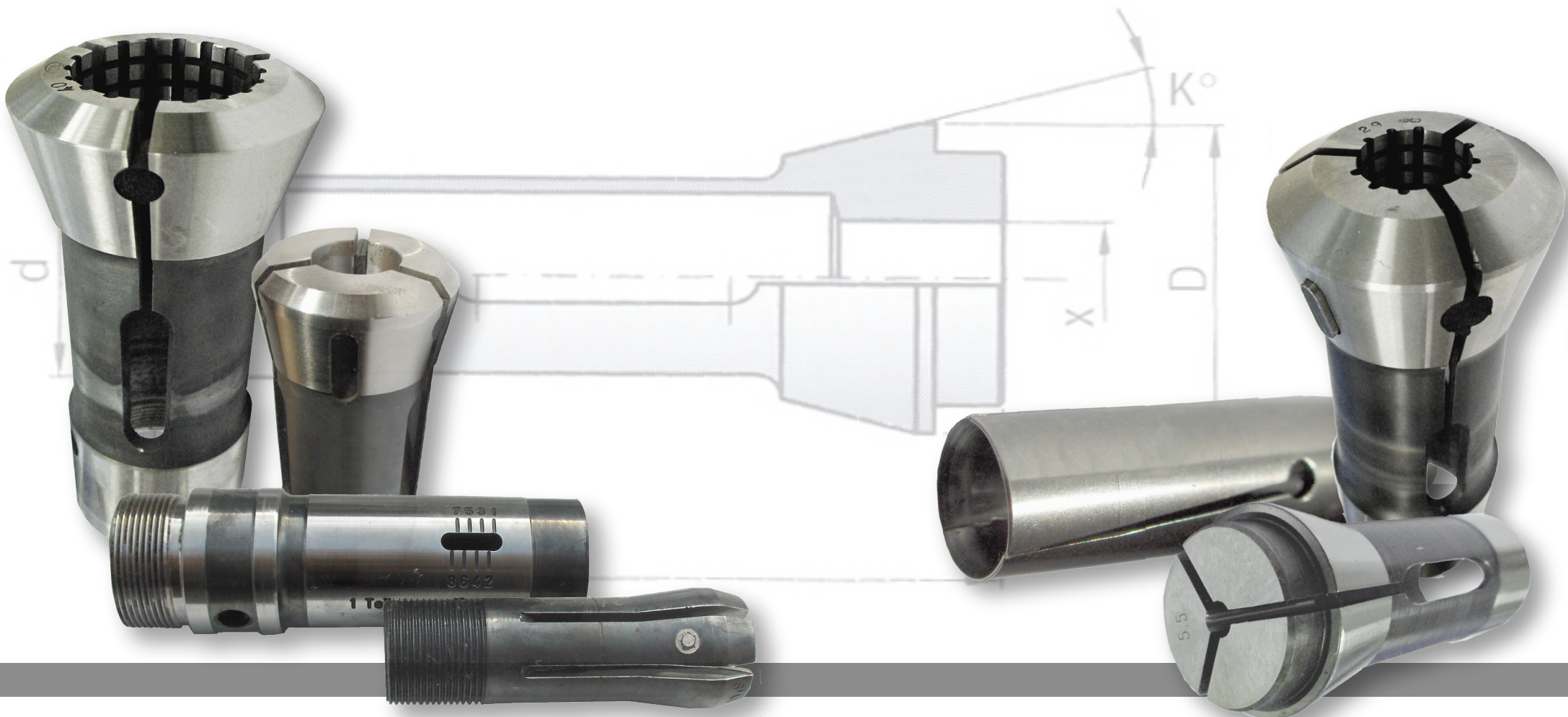
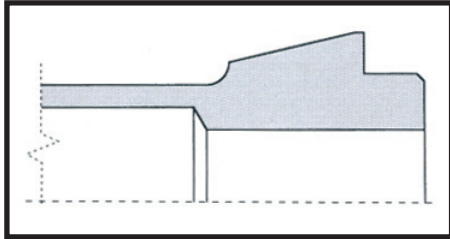


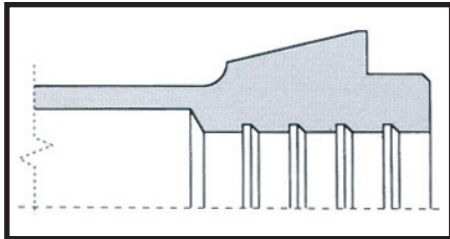
Spannzangen und Vorschubzangen für Mehrspindel-Drehautomaten



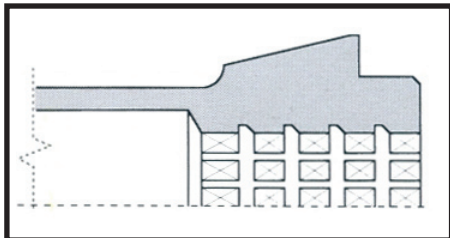
Bohrungsoberfläche



L glatt



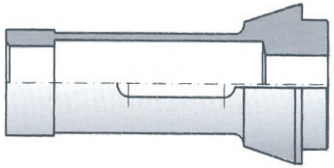
R Umlaufende Querrillen



Z Längs- und Querrillen

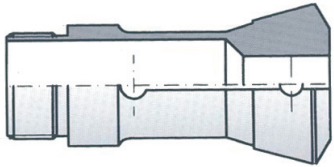
** Der vierte Buchstabe der Artikel-Nr. gibt die Art der Oberfläche an.*

Typ der Spannzange



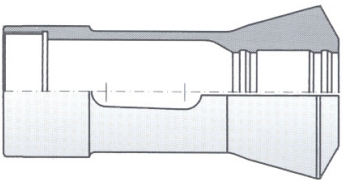
A*

Spannzange ohne Gewinde



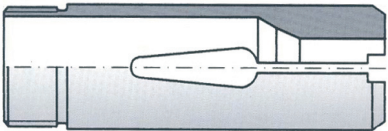
B*

Spannzange mit Außengewinde



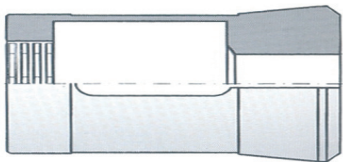
C*

Spannzange mit Innengewinde



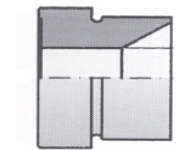
L*

Vorschubzange



Q*

Abgreifzange, Bajonettverschluss

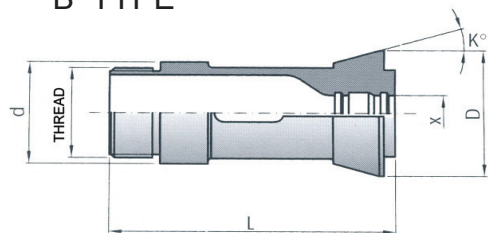


T*

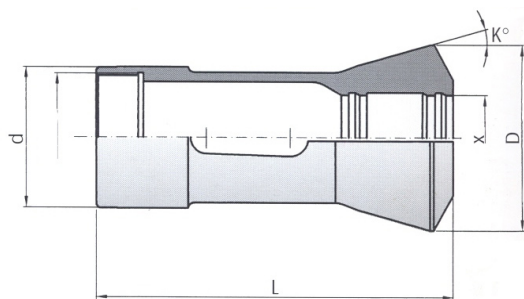
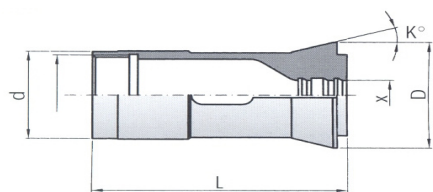
Führungsbüchse

** Der dritte Buchstabe der Artikel-Nr. gibt den Typ der Spannzange an.*

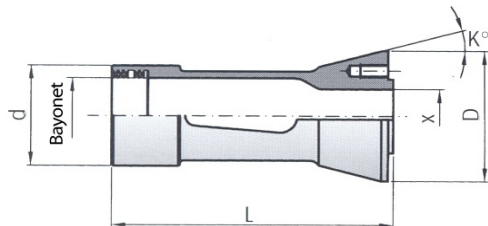
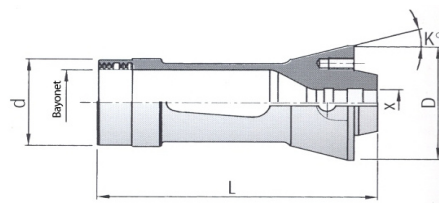
B TYPE



C TYPE



Q TYPE

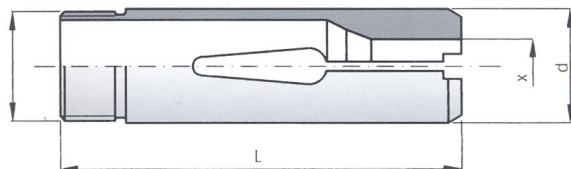
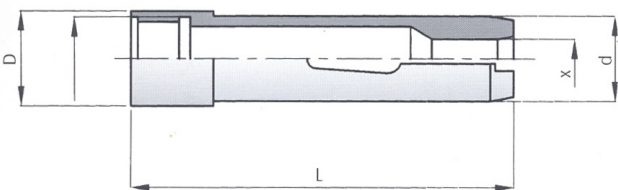


GILDEMEISTER

Spannzangen

MASCHINE	Art-Nr.	E-Nr	Bohrungs- oberfläche	d	D	L	K°	Gewinde	X max		
									●	⬡	■
GM16-AC	DL Q 1103000	9023-E	R	30.0	39.0	80.5	15°	Bajonett Ø 27.12 X 1.5 - 60°	16.0	14.0	11.0
	DL Q 1103002		R	30.0	39.0	86.5	15°	Bajonett Ø 27.12 X 1.5 - 60°	9.0	8.0	8.0
AS16/AS GS GM20-6	DL B 1103400	9012-E	Z	34.0	42.0	90.0	16°	M30 X 1 links	20.0	17.0	14.0
AS16/AS GS GM20-6 V.25	DL C 1103801	9017-E	Z	38.0	45.5	90.0	16°	M34.5 X 0.75 links	25.0	12.0	17.0
AS GS GM32/GM35-6/8	DL C 1105300	9069-E	Z	53.0	69.4	139.0	15°	M48 X 1.5 links	35.0	31.0	25.0
AS GS GM42-6	DL C 1106403	9115-E	Z	64.0	80.5	134.0	15°	M59 X 1.5 links	42.0	37.0	30.0
AS48	DL C 1107000	9132-E	Z	70.0	90.4	167.5	15°	M65 X 1.5 links	48.0	42.0	34.0
AS55	DL C 1107800		Z	78.0	98.4	172.0	15°	M72 X 1.5 links	55.0	48.0	39.0
AS67	DL C 1109000	9178-E	Z	90.0	115.4	183.5	15°	M85 X 1.5 links	63.0	55.0	45.0
AS82	DL C 1110900	9209-E	Z	109.0	138.4	201m	15°	M102 X 1.5 links	82.0	71.0	57.0
AS100	DL C 1112800	9239-E	Z	128.0	160.0	263m		M122 X 1.5 links	100.0	86.0	70.0

L TYPE

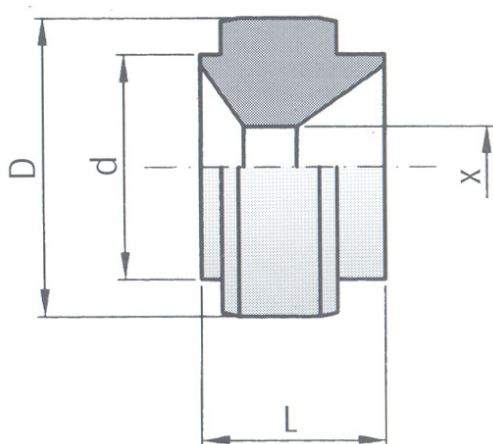
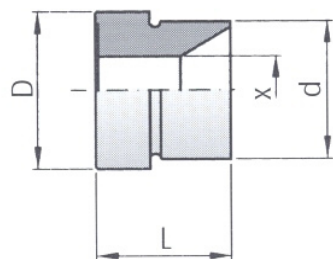
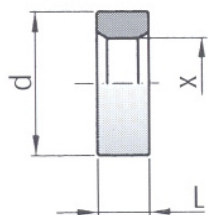


GILDEMEISTER

Vorschubzangen

MASCHINE	Artikel-Nr.	E-Nr	Bohrungs- oberfläche	d	D	L	K°	Gewinde	X max		
									●	⬡	■
GM16-AC	DL L 1102200	9268-E	L	20.0	22.0	86.0		M20 X 1	16.0	14.0	11.0
AS16/AS GS GM20-6	DL L 1102500	9258-E	L	25.0	25.0	90.0		M24 X 1	20.0	17.0	14.0
AS16/AS GS GM20 d.25	DL L 1103050	9288-E	L	30.0	30.5	90.0		M28.5 X 0.75	25.0	22.0	17.0
AS 32-6	DL L 1104121	9336-E	R	39.8	41.2	136.0		M38 X 1.5 links	32.0	28.0	23.0
GM32-6	DL L 1104122	9336-E	R	39.8	41.2	136.0		M38 X 1.5	32.0	28.0	23.0
GM35-6	DL L 1104123	9335-E	R	41.0	41.2	136.0		M39 X 1 links	35.0	31.0	25.0
GM35-6/GM35-8	DL L 1104124	9335-E	R	41.0	41.2	136.0		M39 X 1	35.0	31.0	25.0
GM42-6	DL L 1105150	9374-E	R	50.2	51.5	136.0		M48 X 1.5	42.0	37.0	30.0
AS48	DL L 1105700	9368-E	R	56.0	57.0	160.0		M54 X 1.5 links	48.0	42.0	34.0
AS55	DL L 1106450		R	63.0	64.5	150.0		M62X 1.5 links	55.0	48.0	39.0
AS67	DL L 1107750	9447-E	R	76.0	77.5	170.0		M74 X 1.5 links	67.0	58.0	47.0
AS82	DL L 1109400	9475-E	R	93.0	94.0	180.0		M88 X 1.5 links	82.0	71.0	57.0
AS100	DL L 1111400	9483-E	R	113.0	114.0	235.0		M108 X1.5 links	100.0	86.0	70.0

T TYPE



GILDEMEISTER

Führungsbüchsen

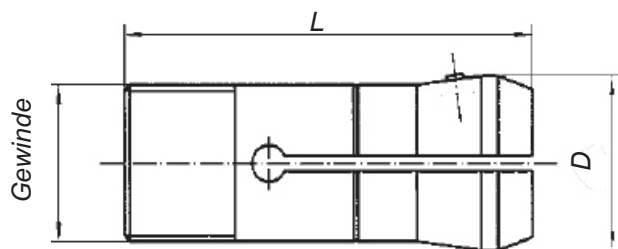
MASCHINE	Art-Nr.	E-Nr.	d	D	L	K°	X max		
							●	⬡	■
GM16 AC	DL T 1101851		16.0	18.5	18.0		13.0	10.0	9.0
	DL T 1101850		18.5	-	12.0		16.0	14.0	11.0
AS16 AS GS GM 20-6	DL T 1102850		28.5	-	10.0		25.0	22.0	18.0
AS16 AS GS GM 20-6 mit Lademagazin	DL T 1102851		25.0	28.5	25.0		20.0	17.0	14.0
GM 32	DL T 1104001		40.0	47.8	43.0		32.0	32.0	22.0
GM 35-6	DL T 1104201		42.0	47.8	43.0		35.0	30.0	24.0
GM 42	DL T 1104700		47.0	52.0	43.0		42.0	36.0	29.0

GILDEMEISTER

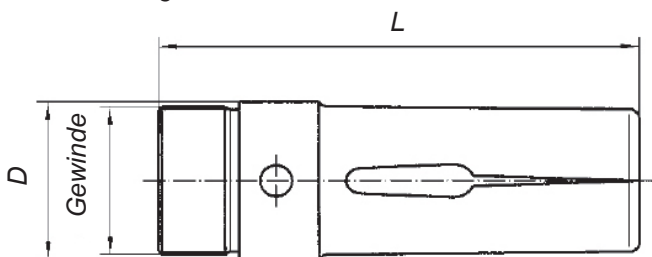
Spannzangen Flex

MASCHINE	E-Nr	Art-Nr. Gehäuse	Art-Nr. Spannkopf	Ober- fläche	d	D	L	K°	Gewinde	Art-Nr. konventionelle Zange
AS GS GM32/GM35-6/8	9069-E	DL301035	DL101035	Z	53.0	69.4	139.0	15°	M48 X 1.5 links	DLC1105300
AS GS GM42-6	9115-E	DL301042	DL101042	Z	64.0	80.5	134.0	15°	M59 X 1.5 links	DLC1106403
AS48	9132-E	DL301048	DL101048	Z	70.0	90.4	167.5	15°	M65 X 1.5 links	DLC1107000
AS67	9178-E	DL301063	DL101063	Z	90.0	115.4	183.5	15°	M85 X 1.5 links	DLC1109000
AS82	9209-E	DL301082	DL101082	Z	109.0	138.4	201m	15°	M102 X 1.5 links	DLC1110900

Innenzange



Außenzange



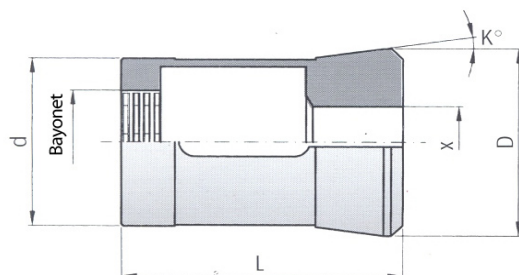
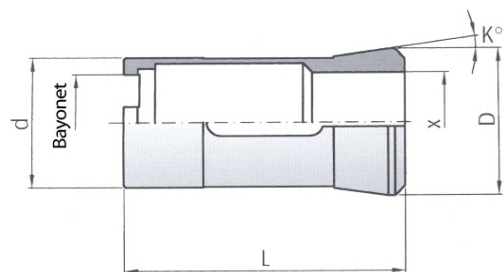
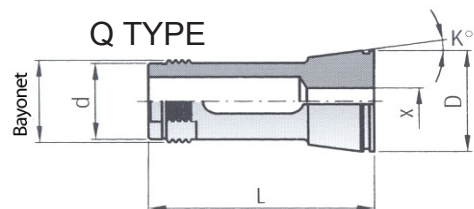
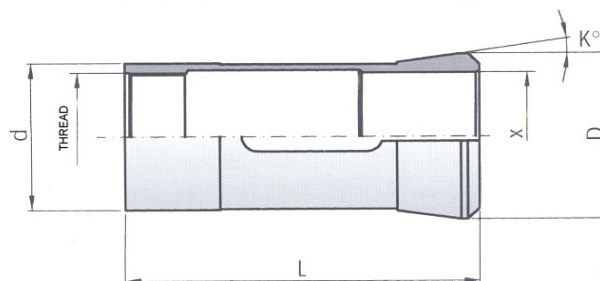
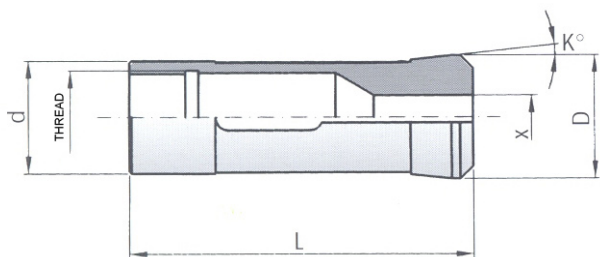
GILDEMEISTER

Vorschubzangen Flex

MASCHINE	E-Nr	Art-Nr. Innenzange	Art-Nr. Außenzange	d	D	L	Gewinde	Art-Nr. konventionelle Zange
GM16-AC	9268-E	DL 401016	DL 201016	20.0	22.0	86	M20 X 1	DL L 1102200
AS16/AS GS GM20-6	9258-E	DL 401020	DL 201020	25.0	25.0	90	M24 X 1	DL L 1102500
AS16/AS GS GM20 d.25	9288-E	DL 401024	DL 201024	30.0	30.5	90	M28.5 X 0.75	DL L 1103050
AS32-6	9336-E	DL 401032	DL 201032	39.8	41.2	136	M 38 X 1.5 links/rechts*	DL L 1104121
GM32-6	9336-E	DL 401032	DL 201032	39.8	41.2	136	M 38 X 1.5 links/rechts*	DL L 1104122
GM42-6	9374-E	DL 401040	DL 201040	50.2	51.5	136	M 48 X 1.5 links/rechts*	DL L 1105150
AS48	9368-E	DL 401048	DL 201048	56.0	57.0	160	M54 X 1.5 links	DL L 1105700
AS67	9447-E	DL 401067	DL 201067	76.0	77.5	170	M74 X 1.5 links	DL L 1107750
AS100	9483-E	DL 401100	DL 201100	113.0	114.0	235	M108 X 1.5 links	DL L 1111400

* Bei Bestellung Art des Gewindes angeben.

C TYPE



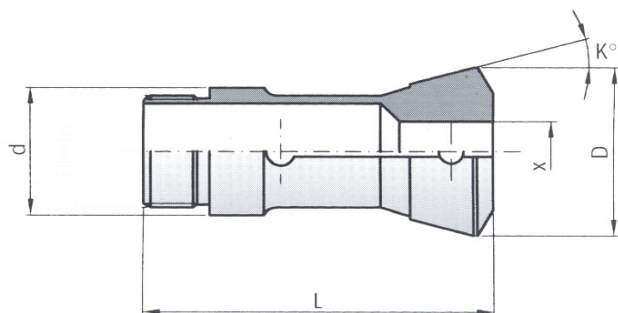
GILDEMEISTER

Abgreifzangen

MASCHINE	Art-Nr.	E-Nr	Bohrungs- oberfläche	d	D	L	K°	Gewinde	X max		
									●	⬡	■
GM16 AC	DL Q 0001870	L	18.7	25.0	51.5	8°	Bajonett Ø 21 X 1.5 - 60°		16.0	14.0	11.0
AS16/AS/GS/GM20-6	DL C 1102600	L	26.0	28.5	80.0	6°	M21.5 X 0.75		20.0	17.0	14.0
	DL C 0002800	L	28.0	32.0	64.0	8°	M24 X 1.5 links		24.0	20.0	16.0
AS32/GM32-35-6	DL C 0003900	L	39.0	44.0	90.0	8°	M34 X 1 links		32.0	28.0	23.0
GM32-35-6/8	DL Q 0003900	L	39.0	44.0	82.0	8°	Bajonett 11 X 4		32.0	28.0	23.0
	DL Q 0003901	L	39.0	44.0	82.0	8°	Bajonett 11 X 4		32.0	28.0	23.0
AS GS GM42-6	DL Q 0004700	L	47.0	52.5	73.0	8°	Bajonett Ø 29 X 2.7 - 30°		42.0	36.0	29.0
AS48	DL C 0005600	L	56.0	60.0	95.0	8°	M51 X 1 links		48.0	42.0	34.0
AS12	DLA 1101200	L	12.0	18.0	44.5	15°			10.0	8.0	7.0
AS16-20 - V.25-6	DLA 1102000	L	20.0	26.0	60.0	15°			20.0	-	-




Sondermaße auf Anfrage verfügbar

B TYPE

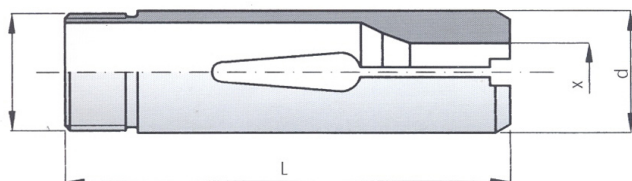


INDEX

Spannzangen

MASCHINE	Art-Nr.	E-Nr	Bohrungs- oberfläche	d	D	L	K°	Gewinde		X max 	
INDEX KS/MS25	DL B 1404600	9039-E	Z	46.0	60.5	112.0	15°	M40 X 1.5 links	25.0	23.0	18.0
INDEX KS32	DL B 1405300	9070-E	Z	53.0	69.3	129.0	15°	M47 X 1.5 links	32.0	28.0	23.0
INDEX KS42	DL B 1406200	9108-E	R	62.0	82.4	180.0	15°	M58 X 1.5 links	42.0	36.0	30.0
INDEX KS50	DL B 1407000	9133-E	R	70.0	92.0	157.0	15°	M65 X 2 links	50.0	43.0	35.0

L TYPE



Vorschubzangen

MASCHINE	Art-Nr.	E-Nr	Bohrungs- oberfläche	d	D	L	K°	Gewinde		X max 	
INDEX KS/MS25	DL L 1403700	9282-E	L	33.0	37.0	118.0		M33 X 1.5	25.0	23.0	18.0
INDEX KS32	DL L 2204300	9319-E	L	40.0	43.0	130.0		M38 X 1.5	32.0	28.0	23.0
INDEX KS42	DL L 1405400	9364-E	L	50.0	54.0	170.0		M50 X 1.5 links	42.0	36.0	30.0
INDEX KS50	DL L 1406001	9402-E	L	57.0	60.0	156.0		M57 X 2 links	50.0	43.0	35.0

INDEX

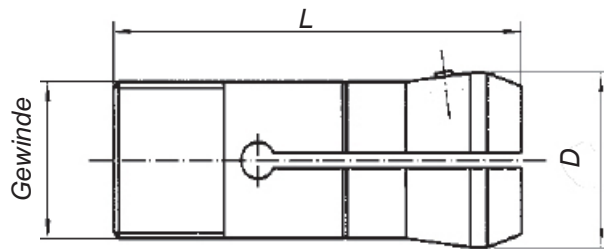
Spannzangen Flex

MASCHINE	E-Nr	Art-Nr. Gehäuse	Art-Nr. Spannkopf	Ober- fläche	d	D	L	K°	Gewinde	Art-Nr. konventionelle Zange
INDEX KS/MS25	9039-E	DL 302025	DL 102025	Z	25.0	23.0	18	15°	M40 X 1.5 links	DL L 1403700

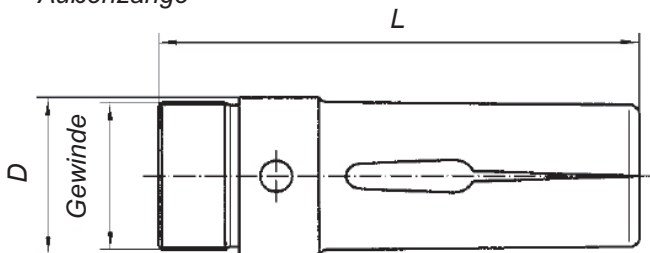
Vorschubzangen Flex

MASCHINE	E-Nr	Art-Nr. Innenzange	Art-Nr. Außenzange	d	D	L	Gewinde	Art-Nr. konventionelle Zange
INDEX KS/MS25	9282-E	DL4 02025	DL 202025	33.0	37.0	118	M33 X 1.5	DL L 1403700
INDEX KS32	9319-E	DL 402032	DL 202032	40.0	43.0	130	M38 X 1.5	DL L 2204300
INDEX KS42	9364-E	DL 402042	DL 202042	50.0	54.0	170	M50 X 1.5 links	DL L 1405400

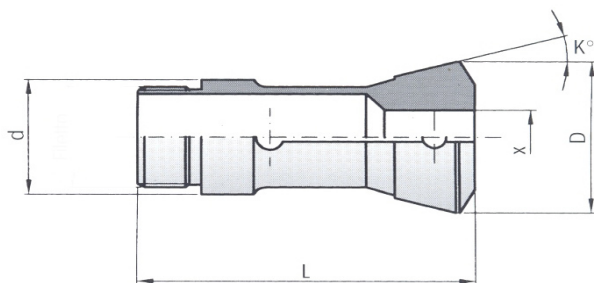
Innenzange



Außenzange



B TYPE

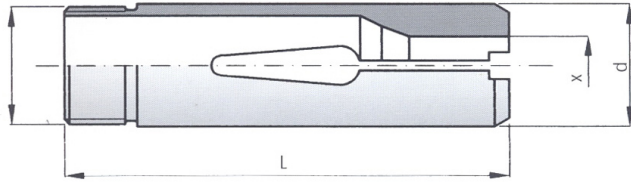


SCHÜTTE

Spannzangen




MASCHINE	Art-Nr.	E-Nr	Bohrungs- oberfläche	d	D	L	K°	Gewinde	X max		
									●	⬡	■
SF13	DL B 2202500	9015-E	L	25.0	36.1	75.5	15°10'	M22 X 1 links	13.0	11.0	9.0
SE16/SE18	DL B 2203200	9007-E	L	31.9	42.0	84.0	15°	M28 X 1 links	18.0	16.0	13.0
VD/SD/SE25/AF/SF26	DL B 2204600	9039-E	R	46.0	60.3	120.0	15°	M40 X 1.5 links	26.0	23.0	18.0
SD/VD32/AF/SF32	DL B 2205300	9070-E	Z	53.0	69.3	136.5	15°	M47 X 1.5 links	32.0	28.0	23.0
AD40/SF42	DL B 2206290	9112-E	Z	62.9	78.3	157.0	15°	M56 X 1.5 links	42.0	36.0	29.0
SD/VD50/AF/SF51	DL B 2207500	9139-E	Z	75.0	97.8	187.0	15°	M68 X 1.5 links	51.0	44.0	36.0
SD/VD63	DL B 2209000	9179-E	Z	90.0	115.3	212.0	15°	M82 X 1.5 links	63.0	55.0	45.0
SD/VD80/AF/SF81	DL B 2210900	9210-E	Z	109.0	138.0	241.0	15°	M100 X 1.5 links	80.0	70.0	57.0

L TYPE

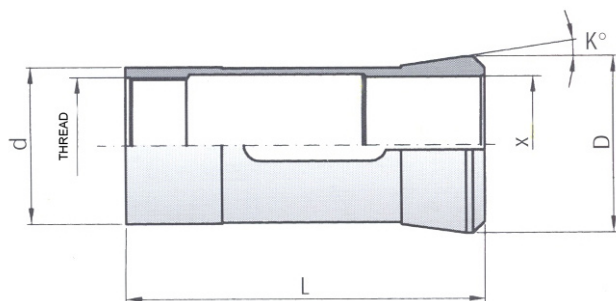


SCHÜTTE

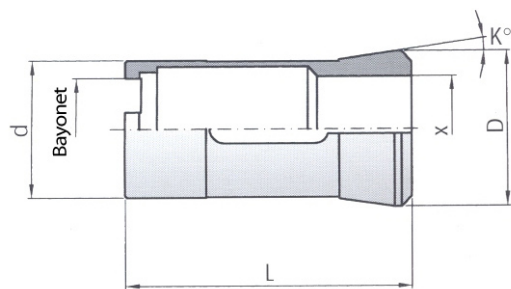
Vorschubzangen

MASCHINE	Art-Nr.	E-Nr	Bohrungs- oberfläche	d	D	L	K°	Gewinde	X max		
											
SF13	DL L 2201960	9261-E	L	17.0	19.6	77.0		M18 X 1	13.0	11.0	9.0
SE16/SE18	DL L 2202500	9255-E	L	23.0	25.0	88.0		M23 X 1	18.0	16.0	13.0
VD/SD/SE25	DL L 2203700	9282-E	L	33.0	37.0	118.0		M33 X 1.5	26.0	23.0	18.0
AF/SF26	DL L 2203500	9282-E	L	33.0	35.0	118.0		M33 X 1.5	26.0	23.0	18.0
SD/VD32/AF/SF32	DL L 2204300	9319-E	L	40.0	43.0	130.0		M38 X 1.5	32.0	28.0	23.0
AD40/SF42	DL L 2205100	9372-E	L	48.0	51.0	158.0		M48 X 1.5	42.0	36.0	29.0
SD/VD50	DL L 2206200	9406-E	L	58.0	62.0	180.0		M58 X 1.5	51.0	44.0	36.0
SD/VD63	DL L 2207701	9450-E	L	72.0	77.0	210.0		M72 X 1.5 links	63.0	55.0	45.0
SD/VD80/AF/SF81	DL L 2209280	9474-E	R	90.0	92.8	238.0		M88 X 1.5 links	80.0	70.0	57.0

C TYPE






Q TYPE



SCHÜTTE

Abgreifzangen

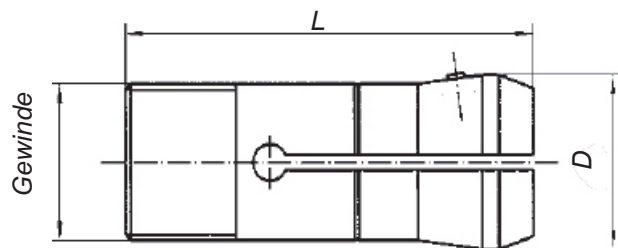
MASCHINE	Art-Nr.	E-Nr	Bohrungs- oberfläche	d	D	L	K°	Gewinde		 X max	
SE16/SE25	DL C 0002800		L	28.0	32.0	64.0	8°	M24 X 1.5 links	23.0	20.0	16.0
SE25	DL Q 0003550		L	35.5	40.0	80.0	8°10'	Bajonett Ø 27 X 2.7 30°	32.0	27.0	22.0
SD32	DL C 0003900		L	39.0	44.0	90.0	8°	M34 X 1 links	32.0	28.0	23.0
AD40 SF42	DL C 0003900		L	39.0	44.0	90.0	8°	M34 X 1 links	32.0	28.0	23.0
SD50-VD50-SF51	DL C 0005600		L	56.0	60.0	95.0	8°	M51 X 1 links	48.0	42.0	34.0

SCHÜTTE

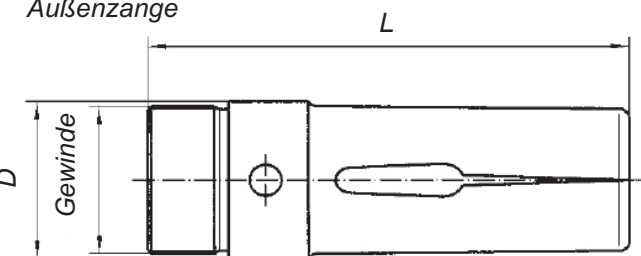
Spannzangen Flex

MASCHINE	E-Nr	Art-Nr. Gehäuse	Art-Nr. Spannkopf	Bohrungs- oberfläche	d	D	L	K°	Gewinde	Art-Nr. konventionelle Zange
VD/SD/SE25/AF/SF26	9039-E	DL 304026	DL 104026	R	46.0	60.3	120.0	15°	M40 X 1.5 left	DL B 2204600
SD/VD32/AF/SF32	9070-E	DL 304032	DL 104032	Z	53.0	69.3	136.5	15°	M47 X 1.5 left	DL B 2205300
AD40/SF42	9112-E	DL 304042	DL 104042	Z	62.9	78.3	157.0	15°	M56 X 1.5 left	DL B 2206290
SD/VD50/AF/SF51	9139-E	DL 304051	DL 104051	Z	75.0	97.8	187.0	15°	M68 X 1.5 left	DL B 2207500
SD/VD63	9179-E	DL 304063	DL 104063	Z	90.0	115.3	212.0	15°	M82 X 1.5 left	DL B 2209000
SD/VD80/AF/SF81	9210-E	DL 304080	DL 104080	Z	109.0	138.0	241.0	15°	M100 X 1.5 left	DL B 2210900

Innenzange



Außenzange

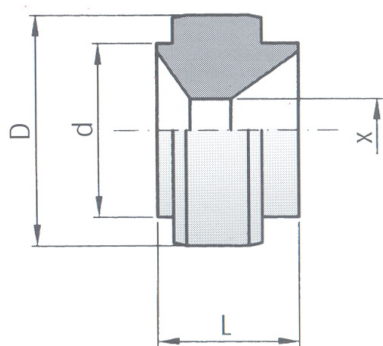
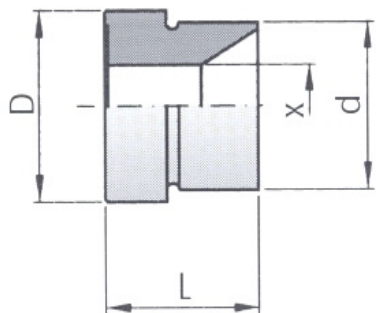
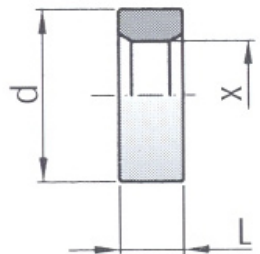


SCHÜTTE

Vorschubzangen Flex

MASCHINE	E-Nr	Art-Nr. Innenzange	Art-Nr. Außenzange	d	D	L	Gewinde	Art-Nr. konventionelle Zange
SF13	9261-E	DL 404013	DL 204013	17.0	19.6	77.0	M18 X 1	DL L 2201960
SE16/SE18	9255-E	DL 404018	DL 204018	23.0	25.0	88.0	M23 X 1	DL L 2202500
AF/SF26	9282-E	DL 404026	DL 204026	33.0	35.0	118.0	M33 X 1.5	DL L 2203500
SD/VD32/AF/SF32	9319-E	DL 404032	DL 204032	40.0	43.0	130.0	M38 X 1.5	DL L 2204300
AD40/SF42	9372-E	DL 404042	DL 204042	48.0	51.0	158.0	M48 X 1.5	DL L 2205100
SD/VD50	9406-E	DL 404051	DL 204051	58.0	62.0	180.0	M58 X 1.5	DL L 2206200
SD/VD63	9450-E	DL 404063	DL 204063	72.0	77.0	210.0	M72 X 1.5 left	DL L 2207701
SD/VD80/AF/SF81	9474-E	DL 404080	DL 204080	90.0	92.8	238.0	M88 X 1.5 left	DL L 2209280

T TYPE

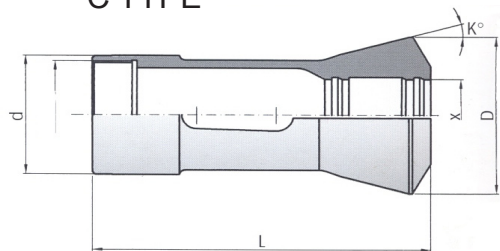


SCHÜTTE

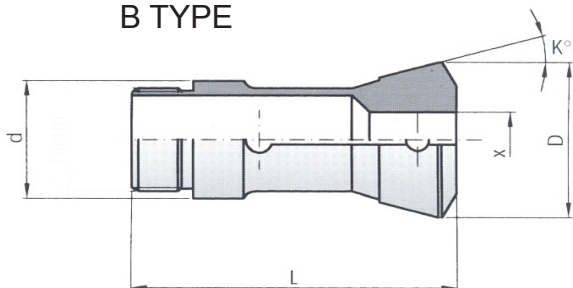
Führungsbüchsen

MASCHINE	Art-Nr.	d	D	L	K°	X max		
						●	⬡	■
SE16	DL T 2202800	28.0	-	24.0		18.0	16.0	13.0
SE25	DL T 2203800	38.0	-	28.0		26.0	22.0	18.0
SD25	DL T 2203801	38.0	46.0	25.0		26.0	22.0	18.0
SF/AF26	DL T 2204001	40.0	-	28.0		32.0	27.0	24.0
VD32	DL T 2204000	40.0	-	28.0		32.0	27.0	22.0
SD32	DL T 2203900	39.0	48.8	29.0		32.0	27.0	22.0
	DL T 2204600	46.0	53.0	30.0		32.0	27.0	22.0
AD40-SF42	DL T 2205000	50.0	54.0	33.0		42.0	36.0	30.0
	DL T 2205200	52.0	-	36.0		42.0	36.0	30.0
	DL T 2206180	50.8	61.8	44.0		42.0	36.0	30.0
SD/VD50-SF51	DL T 2206500	65.0	75.0	35.0		51.0	44.0	36.0
SD63	DL T 2208500	85.0	-	35.0		63.0	55.0	45.0

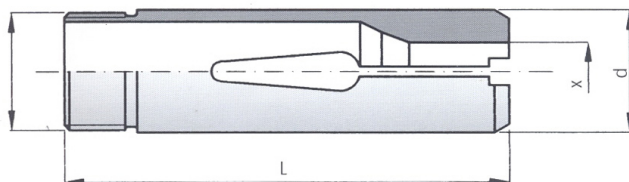
C TYPE



B TYPE



L TYPE



TORNOS

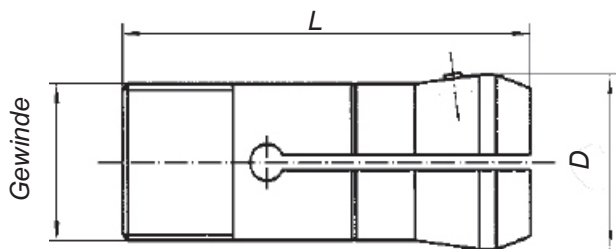
Spannzangen

MASCHINE	Art-Nr.	E-Nr	Bohrungs- oberfläche	d	D	L	K°	Gewinde	X max		
									●	⬡	■
AS14	DL C 1302500	9001-E	R	25.0	35.0	75.0	15°	M22 X 1	14.0	11.0	9.0
SAS16	DL B 1302500	9021-E	R	25.0	35.0	94.0	15° 30'	M25 X 1	16.0	14.0	11.0
BS20B	DL C 1303600	9020-E	R	36.0	45.0	107.0	15° 30'	M33 X 1.25	20.0	17.0	14.0
Multi DECO 26/6	DL B 1304600	9049E-1	R	46.0	60.3	120.0	15°	M40 X 1.5 links	26.0	22.0	18.0

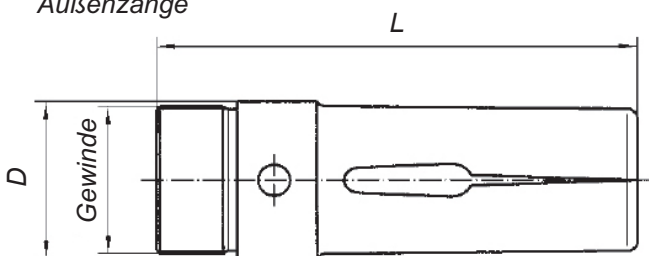
Vorschubzangen

MASCHINE	Art-Nr.	E-Nr	Bohrungs- oberfläche	d	D	L	K°	Gewinde	X max		
									●	⬡	■
AS14	DL L 1301800	9251-E	L	17.5	18.0	70.0		M16 X 0.75	14.0	11.0	9.0
SAS16	DL L 1302280	9265-E	L	20.5	22.8	98.0		M20 X 0.75	16.0	14.0	11.0
BS20B	DL L 1302770	9266-E	L	25.3	27.7	116.0		M25 X 1	20.0	17.0	14.0

Innenzange



Außenzange

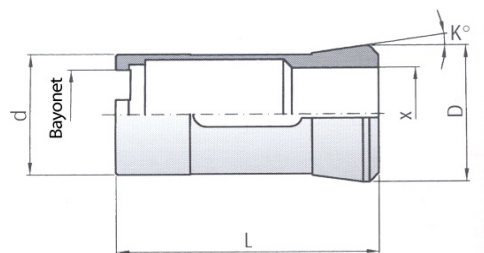


TORNOS

Vorschubzangen Flex

MASCHINE	E-Nr	Art-Nr. Innenzange	Art-Nr. Außenzange	d	D	L	Gewinde	Art-Nr. konventionelle Zange
AS14	9251-E	DL 405014	DL 205014	17.5	18.0	70.0	M16 X 0.75	DL L 1301800
SAS16	9265-E	DL 405016	DL 205016	20.5	22.8	98.0	M20 X 0.75	DL L 1302280
BS20B	9266-E	DL 405020	DL 205020	25.3	27.7	116.0	M25 X 1	DL L 1302770

Q TYPE

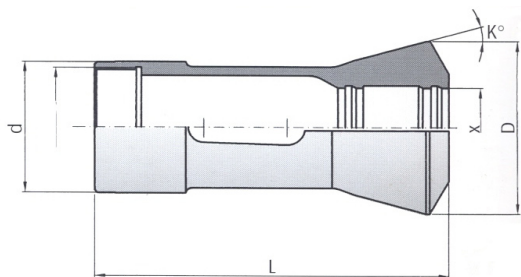


Abgreifzangen

MASCHINE	Art-Nr.	E-Nr	Bohrungs- oberfläche	d	D	L	K°	Gewinde	X max		
Multi DECO 20.6	DL Q 0002800		L	28.0	32.0	73.0	8°	Bayonett	24.5	21.0	17.0
Multi DECO 26.6	DL Q 0003550		L	35.5	40.0	80.0	8°	Bayonett Ø 27 X 2.7 - 30"	14.0	11.0	9.0

Sondermaße auf Anfrage verfügbar

C TYPE

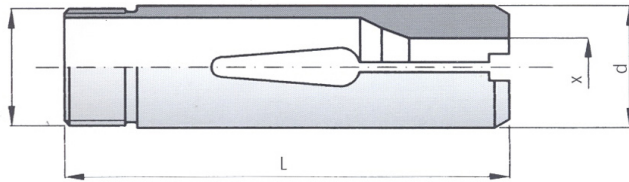


WICKMAN

Spannzangen

MASCHINE	Art-Nr.	E-Nr	Bohrungs- oberfläche	d	D	L	K°	Gewinde	X max		
5/8"-6M	DL C 1202940	9014-E	R	29.40	38.1	92.1	15°	Ø 26.2 X 24 links	16.0	14.0	11.0
1"- 6M	DL C 1204130	9034-E	Z	41.30	54.5	132.0	15°	Ø 37.8 X 24 links	25.0	22.0	18.0
1"- V.30	DL C 1204920		Z	49.21	60.72	110.0	15°	M44.2 X 1 links	30.0	26.0	21.0
1 1/8"-6M	DL C 1205540	9072-E	Z	55.47	67.0	117.0	15°	Ø 50.927 X 22	36.0	31.0	25.0
1 1/4"-6M	DL C 1206420	9111-E	Z	64.21	78.5	127.0	15°	Ø 60.45 X 16	44.0	38.0	31.0
2 1/4"-6M	DL C 1207680	9142-E	Z	76.86	95.5	181.0	15°	Ø 72.46 X 22 links	57.0	49.0	40.0
2 1/4"-5M	DL C 1207770		Z	77.72	89.0	152.5	15°	Ø 73.02 X 16	57.0	49.0	40.0
2 5/8"-6M	DL C 1209200		Z	92.07	111.0	165.0	15°	Ø 85.72 X 18	66.0	57.0	46.0
3 1/4"-6M	DL C 1210600		Z	106.36	127.0	196.85	15°	Ø 100.81 X 16	89.0	77.0	63.0

L TYPE

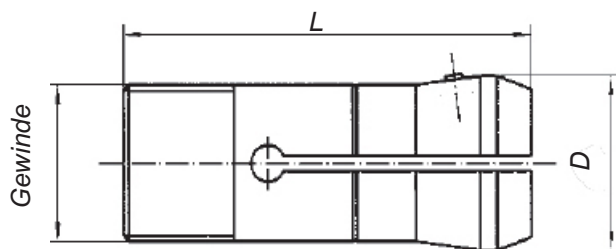


WICKMAN

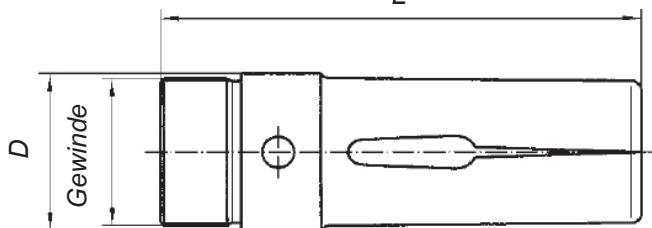
Vorschubzangen

MASCHINE	Art-Nr.	E-Nr	Bohrungs- oberfläche	d	D	L	K°	Gewinde	X max		
									●	⬡	■
5/8"-6M	DL L 1202160	9260-E	L	20.6	21.6	85.7		Ø 19.68 X 24 links	16.0	14.0	11.0
1"- 6M	DL L 1203190	9276-E	L	31.0	31.9	133.0		Ø 30.07 X 24 links	25.0	22.0	18.0
1"- V.30	DL L 1203810		L	37.4	38.0	114.3		Ø 35 X 1 links	30.0	26.0	21.0
1"3/8-6M 1"3/8-5M	DL L 1204280	9318-E	L	41.5	42.84	118.0		Ø 40.46 X 22	36.0	31.0	25.0
1"3/4-6M 1"3/4-5M	DL L 1205220	9362-E	L	51.5	52.21	127.0		Ø 49.98 X 22 links	44.0	38.0	31.0
2"1/4-6M	DL L 1206510	9409-E	L	64.3	65.1	171.5		Ø 62.509 X 22 links	57.0	49.0	40.0
2"1/4-5M	DL L 1206511		L	64.3	65.1	139.7		Ø 62.7 X 22 links	57.0	49.0	40.0
2"5/8-6M	DL L 1207600		L	74.0	76.0	179.0		Ø 73 X 24 links	66.0	57.0	46.0
3"1/4-6M	DL L 1209200		L	90.5	92.07	184.5		Ø 88.9 X 22 links	89.0	77.0	63.0

Innenzange



Außenzange

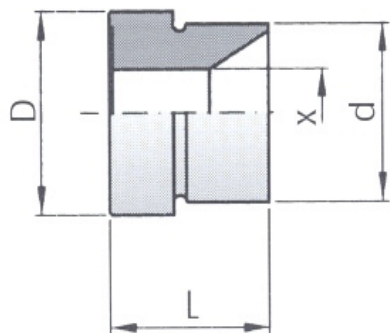
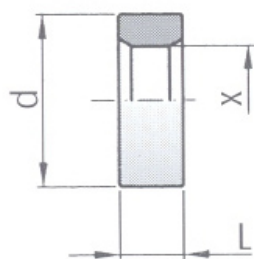


WICKMAN

Vorschubzangen Flex

MASCHINE	E-Nr	Art-Nr. innen	Art-Nr. außen	d	D	L	Gewinde	herkömmliche Art-Nr.
5/8"-6M	9260-E	DL 406016	DL 206016	20.6	21.6	85.7	Ø 19.68 X 24 links	DL L 1202160
1"- 6M	9276-E	DL 406025	DL 206025	31.0	31.9	133.0	Ø 30.07 X 24 links	DL L 1203190
1 1/8"-6M 1 1/8"-5M	9318-E	DL 406036	DL 206036	41.5	42.84	118.0	Ø 40.46 X 22	DL L 1204280
1 3/4"-6M 1 3/4"-5M	9362-E	DL 406044	DL 206044	51.5	52.21	127.0	Ø 49.98 X 22 links	DL L 1205220

T TYPE

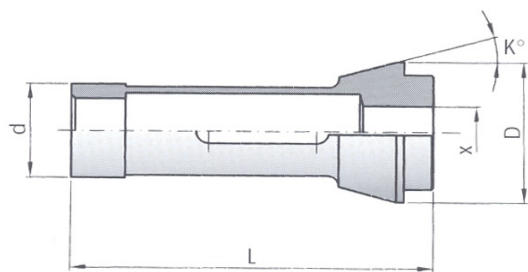


Führungsbüchsen

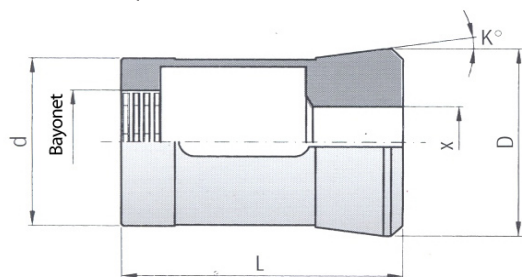
MASCHINE	Art-Nr.	d	D	L	K°	X max		
5/8"-6M	DL T 1202850	28.5	-	19.0		●	●	■
1"- 6M	DL T 1203020	30.2	41.0	16.0		●	●	■
	DL T 1203490	34.9	42.0	25.5		●	●	■
1 1/8" 5-6M	DL T 1204445	44.45	49.21	26.98		●	●	■
1 3/4" 5-6M	DL T 1205080	50.8	58.7	28.5		●	●	■
2 1/4" 5-6M	DL T 1206660	66.67	77.5	43.0		●	●	■

Sondermaße auf Anfrage verfügbar

A TYPE



Q TYPE

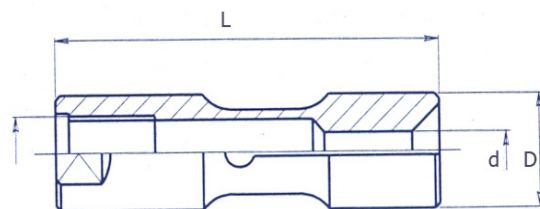


WICKMAN

Abgreifzangen

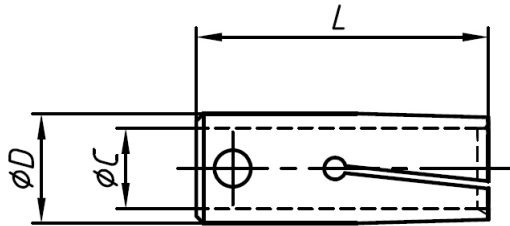
MASCHINE	Art-Nr.	E-Nr	Bohrungs- oberfläche	d	D	L	K°	Gewinde	X max		
5/8"-6M	DL A 1201900		L	19.04	25.4	55.56	15°		14.0	12.0	10.0
1"-6M	DL Q 0003550		L	35.5	40.0	80.0	8°		20.0	17.0	14.0
	DL Q 0003551		L	35.5	40.0	80.0	8°	Bajonett Ø 27 X 2.7 30°	32.0	27.0	22.0
1"3/8 1"3/4	DL Q 0004700		L	47.0	52.5	73.0	8°	Bajonett Ø 29 X 2.7 30°	42.0	36.0	29.0
	DL Q 0004701		L	47.0	52.5	73.0	8°	Bajonett Ø 29 X 2.7 30°	42.0	36.0	29.0

Vorschubzangen für Lademagazine CUCCHI

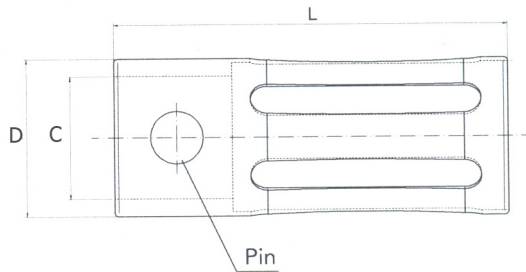


MASCHINE	Art-Nr.	E-Nr	d	D	L	Gewinde
CUCCHI PB 20	DLPB20		4-18	20	60	M10 X 1 links
CUCCHI PB 24	DLPB24		4-22	24	60	M14 X 1 links
CUCCHI PB 30	DLPB30		4-28	30	65	M18 X 1,5 links
CUCCHI PB 35	DLPB35		6-33	35	70	M18 X 1,5 links
CUCCHI PB 38	DLPB38		10-36	38	70	M25 X 1,5 links
CUCCHI PB 42	DLPB42		10-40	42	70	M25 X 1,5 links
CUCCHI PB 48	DLPB48		10-45	48	70	M30 X1,5 links
CUCCHI PB 60	DLPB60		10-57	60	80	M30 X1,5 links

Spannhülsen für Lademagazine IEMCA / Robobar / LNS



USA TYPE



MASCHINE		Art-Nr.	C	D	L	Maße		Stufe
						von	bis	
IEMCA / ROBOBAR / LNS		DKROB10	7	10	40	2.0	8.0	0.5
IEMCA / ROBOBAR / LNS		DKROB12	8	12	40	2.0	10.0	0.5
IEMCA / ROBOBAR / LNS		DKROB15	11	15	40	2.0	13.0	0.5
IEMCA / ROBOBAR / LNS		DKROB18	11	18	40	2.5	16.0	0.5
IEMCA / ROBOBAR / LNS		DKROB20	14	20	65	2.5	18.0	0.5
IEMCA / ROBOBAR / LNS		DKROB25	20	25	65	4.0	23.0	0.5
IEMCA / ROBOBAR / LNS		DKROB28I	20	28	65	6.0	26.0	0.5
IEMCA / ROBOBAR / LNS		DKROB30I	20	30	65	8.0	28.0	0.5
IEMCA / ROBOBAR / LNS		DKROB32	20	32	65	8.0	30.0	0.5
IEMCA / ROBOBAR / LNS	USA TYPE	DKROB15USA	11	15	40	12.0	14.0	0.5
IEMCA / ROBOBAR / LNS	USA TYPE	DKROB16USA	11	16	40	13.0	15.0	0.5
IEMCA / ROBOBAR / LNS	USA TYPE	DKROB32USA	14	20	65	16.0	19.0	0.5
IEMCA / ROBOBAR / LNS	USA TYPE	DKROB21USA	14	21	65	18.0	20.0	0.5
IEMCA / ROBOBAR / LNS	USA TYPE	DKROB22USA	14	22	65	18.0	21.0	0.5
IEMCA / ROBOBAR / LNS	USA TYPE	DKROB23USA	14	23	65	19.0	22.0	0.5
IEMCA / ROBOBAR / LNS	USA TYPE	DKROB25USA	20	25	65	21.0	24.0	0.5
IEMCA / ROBOBAR / LNS	USA TYPE	DKROB26USA	20	26	65	23.0	25.0	0.5
IEMCA / ROBOBAR / LNS	USA TYPE	DKROB32USA	20	32	65	29	31	1.0
IEMCA / ROBOBAR / LNS	USA TYPE	DKROB33USA	20	33	65	30	32	1.0

Sondermaße auf Anfrage verfügbar

HWH GmbH Werkzeughandel

Lanzstraße 6

D-68789 St.Leon-Rot

Tel (+49) 06227-865 123

Fax (+49) 06227-865 111

Mail info@hwh-tools.de

www.hwh-tools.de